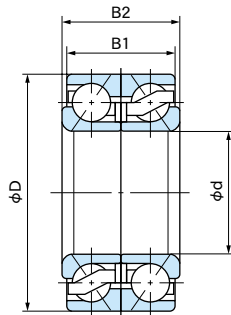
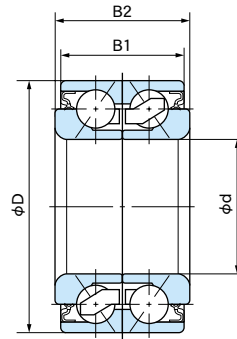


## Wheel Bearings



Type A (Open type)



Type B (Contact sealed type)

| Bearing No.    | Boundary dimensions (mm) |    |    |    | Type |
|----------------|--------------------------|----|----|----|------|
|                | d                        | D  | B1 | B2 |      |
| 27BVV06-2G     | 27                       | 60 | 50 | 50 | B    |
| 30BVV06-2G     | 30                       | 68 | 45 | 45 | B    |
| 32BVV07-7G     | 32                       | 72 | 45 | 45 | A    |
| 32BVV07-8G     | 32                       | 72 | 45 | 45 | A    |
| 35BVV07-9G     | 35                       | 77 | 42 | 42 | A    |
| 38BVV07-10G    | 38                       | 72 | 40 | 40 | B    |
| 38BVV07-20G    | 38                       | 73 | 40 | 40 | B    |
| V1-38BVV07-22G | 38                       | 74 | 40 | 40 | B    |
| 38BVV07-26G    | 38                       | 74 | 33 | 36 | A    |
| 40BVVS6-2NSL   | 40                       | 80 | 45 | 45 | B    |
| 43BVV08-4G     | 43                       | 82 | 45 | 45 | B    |